

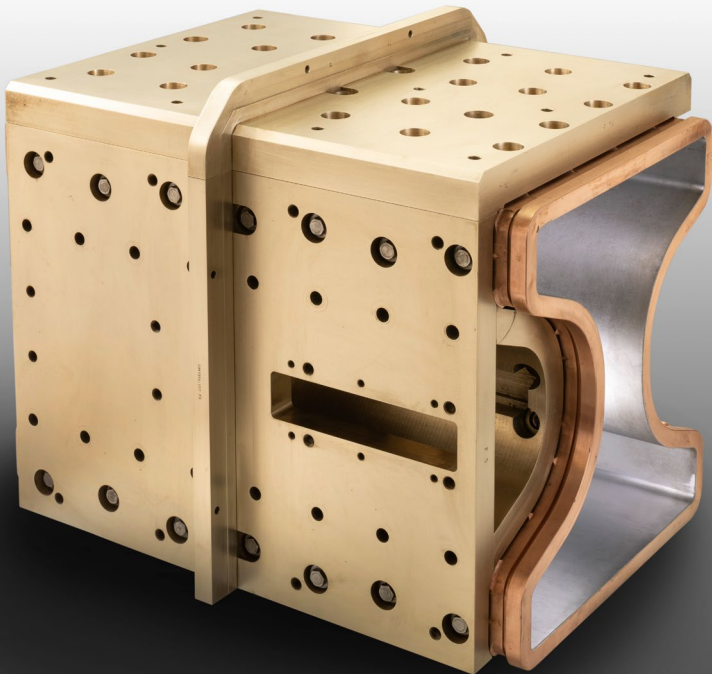
# ABBM ADVANCED BEAM BLANK MOULD TUBE

## CHALLENGE

- Improve Beam Blank quality
- Eliminate corner gaps and improve uniformity of mould cooling

## SOLUTIONS

- Replace traditional four-piece bloom mould plate with one-piece mould tube design
- Thin-walled copper tube design and uniform water gap cooling design
- Low stress AFM® mounting technology (KME patent)



## APPLICATION

- All Beam Blank moulds

## ADVANTAGES

- Optimized cooling conditions due to water gap-type cooling and special designed back-up plates avoiding an overcooling of the corner area.
- Homogeneous temperature profile of bloom
- Increased average heat transfer rate
- Improved strand quality
- Repair by inside copper coating and mechanical machining with keeping constant Cu wall thickness above cooling water
- Repair 4 – 5 times possible
- Reduced operation costs due to lower maintenance costs